

It's Not Just Support. It's Solutions.

[View online version](#)



**DiaPharma has the tools for your alcoholic liver disease research**

## Complement Biomarkers for Alcoholic Hepatitis

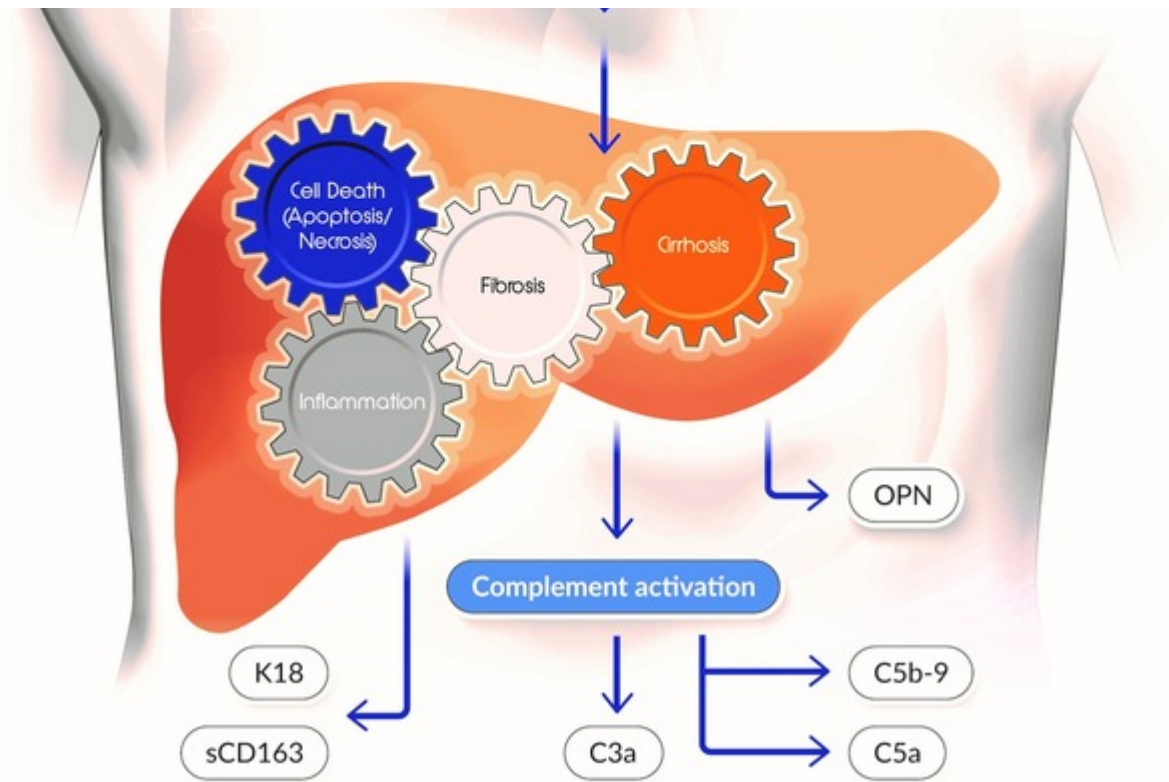
The complement system is a critical component of the immune system that aids in the body's defense against bacterial and/or viral infections. However, excessive activation of the complement system can result in uncontrolled inflammatory responses leading to organ damage, e.g. liver injury.

It was previously believed that in Alcoholic Hepatitis (AH), hepatocellular injury is the result of the direct deleterious effects of ethanol on liver cells by inducing oxidative stress and mitochondrial dysfunction.

Recent studies have shown that complement activation may also play a role in the pathogenesis AH. Complement factors are therefore attractive candidates for biomarkers in research studies that may indicate severity of disease and predict response to therapies for the treatment of AH.

Moreover, components of the complement pathway could also be potential targets for therapeutic intervention themselves.





#### Complement Biomarker Assays Available from DiaPharma:

- DiaPharma C3a ELISA
- DiaPharma C5a ELISA
- DiaPharma sC5b-9 ELISA

#### Measure apoptosis and total cell death with our cytokeratin 18/Keratin 18 (CK18/K18) biomarkers:

- M30 Apoptosense® ccK18 ELISA
- M65® ELISA K18 ELISA
- M65® EpiDeath® ELISA

#### Additional Biomarkers of Interest:

- Osteopontin (OPN)
- Soluble CD163 (sCD163)

Visit [diapharma.com](http://diapharma.com) for our comprehensive portfolio.

*All products are for research use only in the U.S. and Canada. Not for use in diagnostic procedures.*

**It's Not Just Support. It's Solutions.**

Over 20 years of scientific expertise,



Visit [diapharma.com](http://diapharma.com)

This e-mail has been sent to [jkiblinger@diapharma.com](mailto:jkiblinger@diapharma.com), [click here to unsubscribe](#).

**DiaPharma Group, Inc. 8948 Beckett Rd, West Chester, OH 45069**

Technical Support: 1.800.447.3846

ML-00-00814Rev01