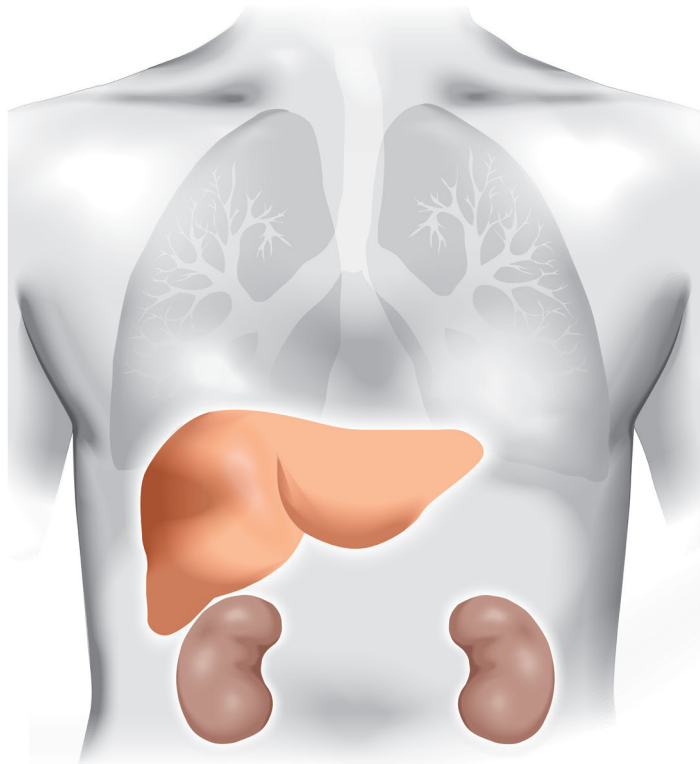


# EMERGING EXPLORATORY BIOMARKERS FOR EVALUATING DRUG SAFETY



## Mechanistic safety biomarkers for DILI and DIKI Research

Visit Diapharma to discuss our extensive line of biomarkers and antibodies for liver and kidney injury studies.

- M30 Apoptosense® ELISA detects hepatocyte apoptosis
- M65®/M65 Epideath® ELISAs detect both apoptosis and necrosis
- $\alpha$ -GST, Collagen IV, NGAL/ lipocalin, Cystatin C, and more
- Assess liver injury in early-stage research studies before standard biomarkers are elevated

**Visit us at booth 4081 for an introductory offer.**  
[diapharma.com](http://diapharma.com)

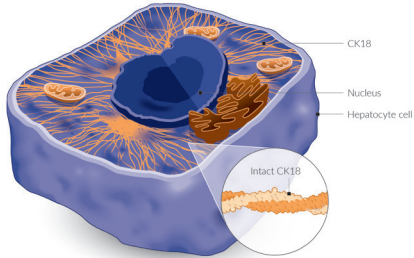


**800.526.5224**

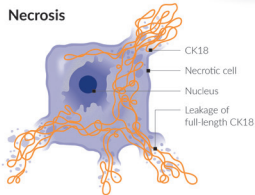
FOR RESEARCH USE ONLY IN THE U.S. AND CANADA

ML-00-00406Rev01

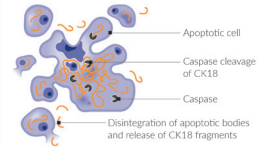
## Hepatocyte cell death



### Necrosis



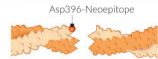
### Apoptosis



Only intact CK18



Caspase-cleaved CK18

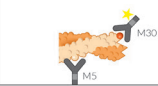


**M65® ELISA**  
**M65 EpiDeath® ELISA**



Measurement of intact and cleaved CK18  
**The M65 ELISAs measure total cell death**  
(necrosis and apoptosis)

**M30 Apoptosense® ELISA**  
**M30 CytoDeath™ ELISA**



Measurement of cleaved CK18 only  
**The M30 ELISAs measure**  
only apoptosis

**Diapharma**  
8948 Beckett Road  
West Chester, OH 45069

**Diapharma** invites you to visit us at booth 4081 to discuss biomarkers for DILI/DIKI studies.

[www.diapharma.com](http://www.diapharma.com) | 800.526.5224